

PRO-Line Positioners

Welding Positioners PRO 1

With 20 mm hollow shaft

Features

- The turntable PRO 1 has a precise drive unit with face-plate that is mounted on a stable floor stand.
- The tilting bracket offers the possibility to put the work-piece via a tilting range of 0° – 90 °into the required welding position.
- The rotary motion occurs via a direct current gearmotor with worm gear and is infinitely adjustable.
- Table diameter: 300 mm. The surface is chrome-plated as a protection against weld spatters.
- The control panel is easy to understand and operate.
- Start/stop via location-independent foot switch.
- Adjustment of turning speed and rotating direction directly via the machine.
- HF-protected.



Scope of delivery:
1 Control system (integrated)
1 Foot switch

Model	PRO 1
Supply voltage	AC 230 V/50 Hz
Ground connection	300 A/100 %
Tilting range	0° – 90°
Table diameter	300 mm
Hollow shaft	20 mm
Mounting hole circle Ø	100mm up to max. 264 mm
Speed	A: 0,2 – 2 rpm B: 1,2 – 12 rpm
Rotating directions	cw/ccw
Max. load A	100 kg
Measur. (L x W x H) mm	480 x 325 x 470
Weight	50 kg
Item no.	71801118



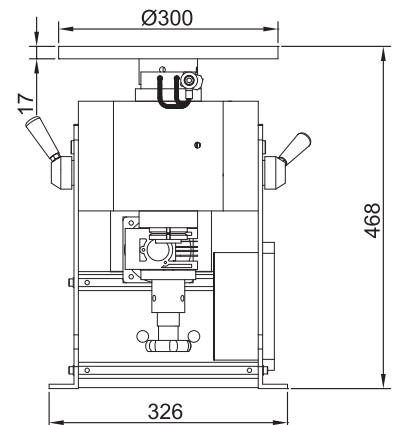
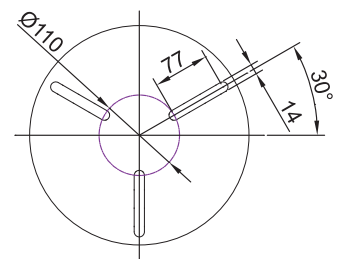
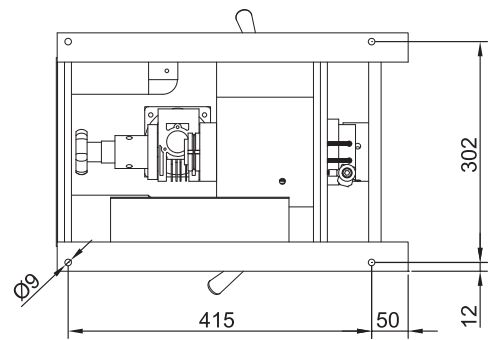
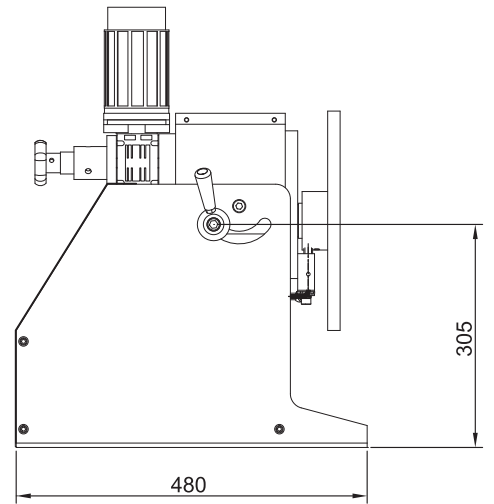
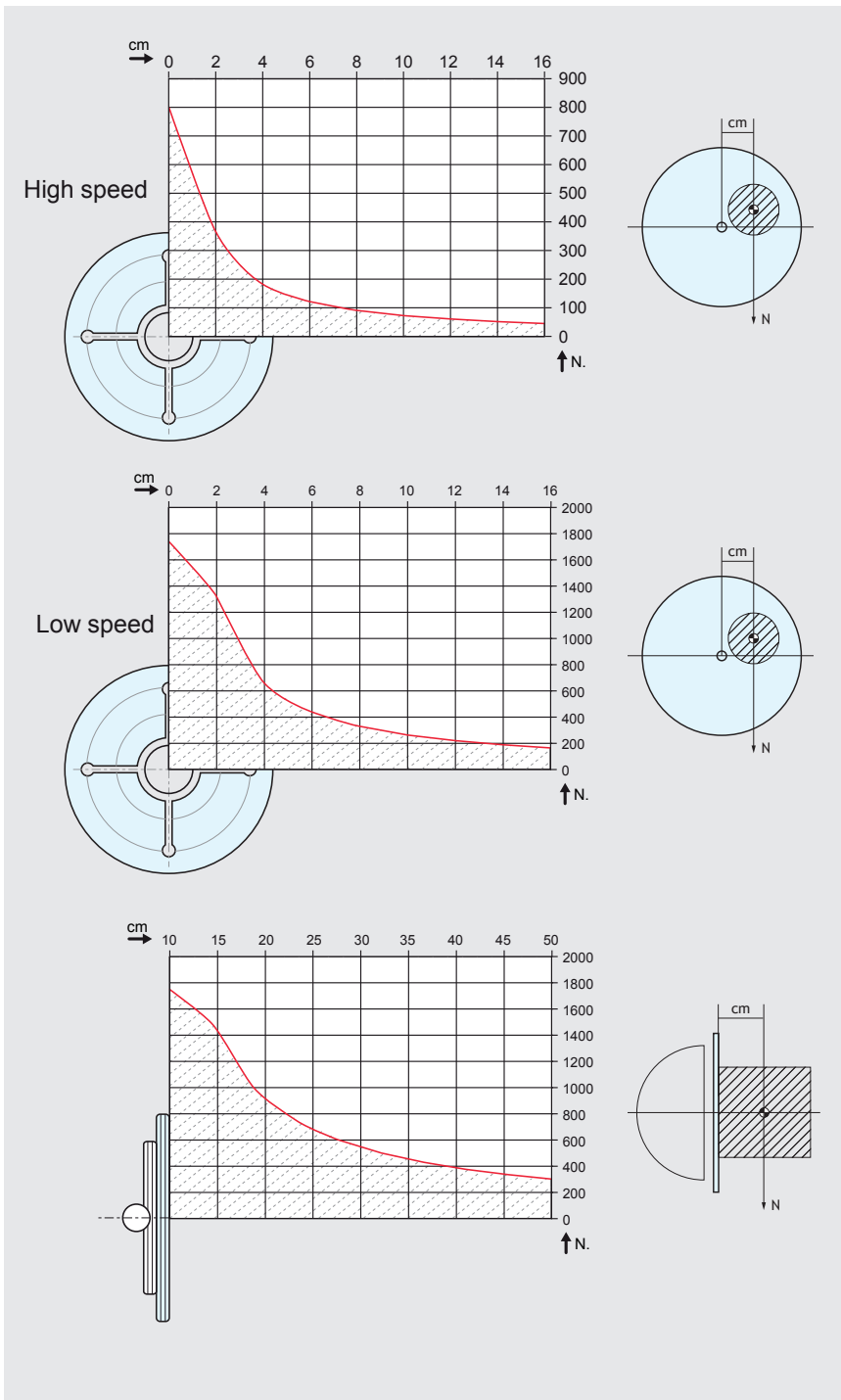
Note

suitable for Three-jaw Chuck 160D, Chuck 200D and Cuck 300 JW.



PRO-Line Positioners

Welding Positioners PRO 1



When choosing your positioner, please consider

- the center of gravity of your workpiece
- the weight of your tensioning device (chuck)

Modular Positioner Systems

Welding Positioner PRO 2

With 60 mm hollow shaft

Features

- Tilting and clamping from 0° to 90°.
- Start/stop via location-independent foot switch.
- Rotating direction adjustable: cw/ccw.
- Rotating time adjustable.
- 60 mm hollow shaft.
- Table diameter: 340 mm. The surface is chrome-plated as a protection against weld spatters.
- Table speed adjustable from 0,6 – 6 rpm.
- Welding machine can be actuated via turntable control.
- Mass contact transmits 300A/100%.
- Turntable and control unit are separated.
- HF-protected.



Model	PRO 2
Supply voltage	AC 230 V/50 Hz
Ground connection	300 A/100 %
Tilting range	0° – 90°
Table diameter	340 mm
Speed	0,6 – 6 rpm
Rotating directions	cw/ccw
Max. load horizontal	160 kg
Hollow shaft	60 mm
Mounting hole circle Ø	114mm up to max. 302 mm
Measur. (L x W x H) mm	385 x 340 x 375
Weight	56 kg
Item no.	02.30.01.10110 (old:71801114)

Max. load of PRO 2 in horizontal position:
160 kg



- COM-1000: easy control start/stop, cw/ccw
- COM-1802: easy control start/stop, cw/ccw
- COM-1803S: easy control start/stop, cw/ccw and with Speeddisplay
- COM-1800 VSF: with potentiometric foot switch
- COM-2800: with overlap welding, pneumatic control for automated welding
- COM-2803S: with overlap welding, pneumatic control and. with Speeddisplay
- COM-3800: with overlap welding / Spot welding and tack welding
- COM-1803 ROB: with Robotic interface

Detailed information on
PRO-turntable control systems
on page 94!



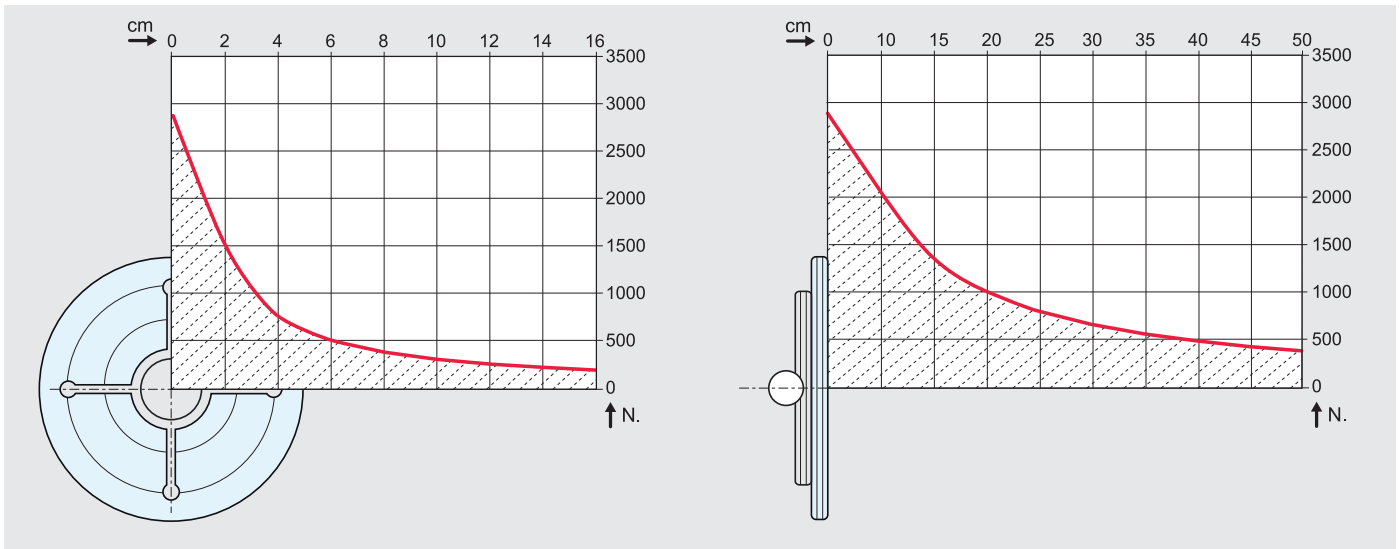
Modular Positioner Systems

Welding Positioner PRO 2

Perfectly positioned

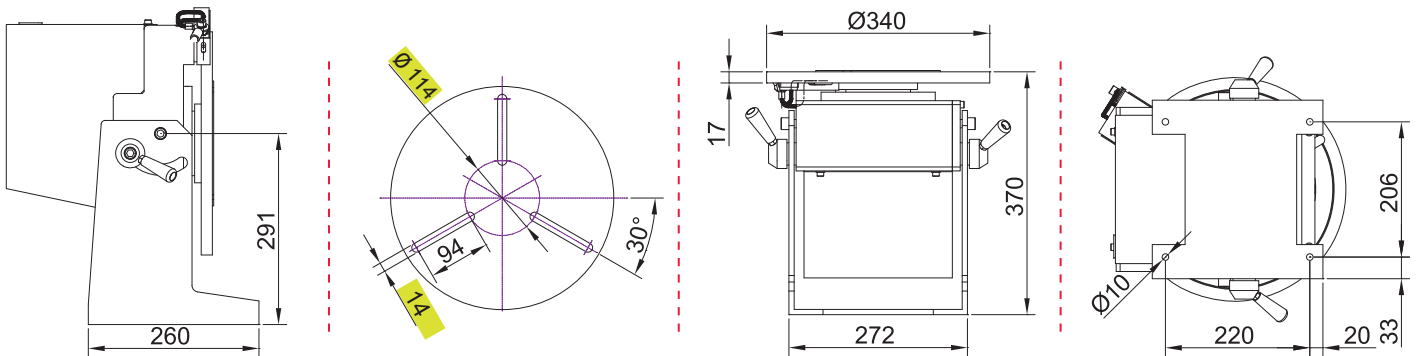
When choosing a turntable, the turning and tilting moment must be considered by all means. The distance between the center of gravity of the workpiece and the faceplate must be considered and the eccentric distance of the center of gravity and the center respectively. Don't forget

the weight of the clamping device. It is often higher than the weight of the workpiece itself. The workpieces can be positioned optimally for welding with a turning and tilting table. This improves productivity and quality significantly.



When choosing your positioner, please consider

- the center of gravity of your workpiece
- the weight of your tensioning device (chuck)



Note

suitable three-jaw chuck for Pro 2 Chuck 160 D up to Chuck 325 D and Chuck 400JW



Modular Positioner Systems

Welding Positioner PRO 3

With 60 mm hollow shaft

Features

- Tilting and clamping from 0° to 90°.
- Start/stop via location-independent foot switch.
- Rotating direction adjustable: cw/ccw.
- Rotating time adjustable.
- 60 mm hollow shaft.
- Table diameter: 340 mm. The surface is chrome-plated as a protection against weld spatters.
- Table speed adjustable from 0,6 – 6 rpm.
- Welding machine can be actuated via turntable control.
- Mass contact transmits 300A/100%.
- Turntable and control unit are separated.
- HF-protected.



Model	PRO 3
Supply voltage	AC 230 V/50 Hz
Ground connection	300 A /100 %
Tilting range	0° – 90°
Table diameter	340 mm
Speed	0,6 – 6 rpm
Rotating directions	cw / ccw
Max. load horizontal	300 kg
Hollow shaft	60 mm
Mounting hole circle Ø	114mm up to max. 302 mm
Measur. (L x W x H) mm	380 x 340 x 425
Weight	62 kg
Item no.	02.30.01.10130 (old:71801116)

Max load of PRO 3 in horizontal position:
290 kg.



- COM-1000: easy control start/stop, cw/ccw
- COM-1802: easy control start/stop, cw/ccw
- COM-1803S: easy control start/stop, cw/ccw and with Speeddisplay
- COM-1800 VSF: with potentiometric foot switch
- COM-2800: with overlap welding, pneumatic control for automated welding
- COM-2803S: with overlap welding, pneumatic control and. with Speeddisplay
- COM-3800: with overlap welding / Spot welding and tack welding
- COM-1803 ROB: with Robotic interface

Detailed information on
PRO-turntable control systems
on page 94!



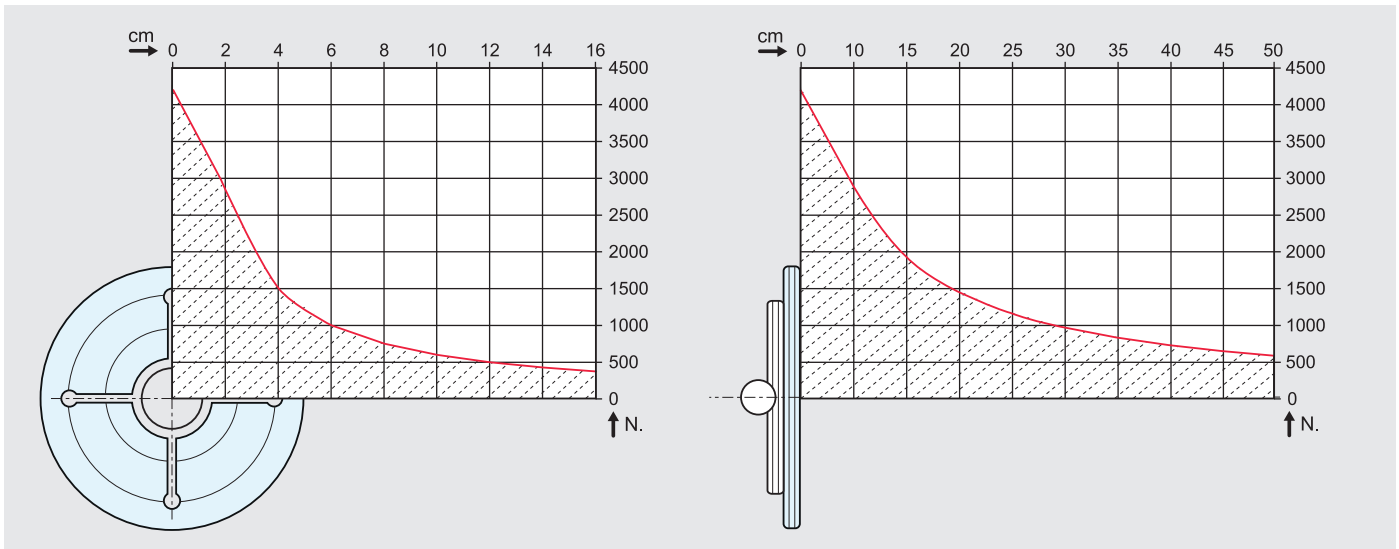
Modular Positioner Systems

Welding Positioner PRO 3

Perfectly positioned

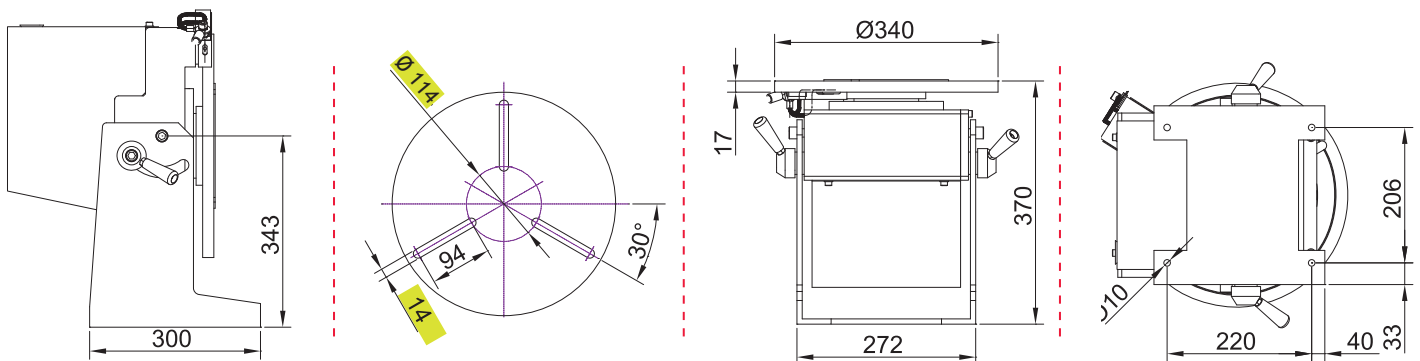
When choosing a turntable, the turning and tilting moment must be considered by all means. The distance between the center of gravity of the workpiece and the faceplate must be considered and the eccentric distance of the center of gravity and the center respectively. Don't forget

the weight of the clamping device. It is often higher than the weight of the workpiece itself. The workpieces can be positioned optimally for welding with a turning and tilting table. This improves productivity and quality significantly.



When choosing your positioner, please consider

- the center of gravity of your workpiece
- the weight of your tensioning device (chuck)



Note

suitable three-jaw chuck for Pro 3 Chuck 160 D to Chuck 325 D and Chuck 400JW



figg. Chuck 400JW

Modular Positioner Systems

Welding Positioner PRO 4

With 120 mm hollow shaft

Features

- Tilting and clamping from 0° to 90°.
- Start/stop via location-independent foot switch.
- Rotating direction adjustable: cw/ccw.
- Rotating time adjustable.
- 120 mm hollow shaft.
- Table diameter: 400 mm. The surface is chrome-plated as a protection against weld spatters.
- Table speed adjustable from 0,2 - 2 rpm.
- Welding machine can be actuated via turntable control.
- Mass contact transmits 300A/100%.
- Turntable and control unit are separated.
- HF-protected.



Model	PRO 4
Supply voltage	AC 230 V/50 Hz
Ground connection	300 A/100 %
Tilting range	0° - 90°
Table diameter	400 mm
Speed	0,2 - 2 rpm
Rotating directions	cw/ccw
Max. load horizontal	400 kg
Hollow shaft	120 mm
Mounting hole circle Ø	180 mm to max. 360 mm
Measurements (L x W x H) mm	480 x 400 x 425
Weight	69 kg
Item no.	02.30.01.10140 (old:71801168)



- COM-1000: easy control start/stop, cw/ccw
 COM-1802: easy control start/stop, cw/ccw
 COM-1803S: easy control start/stop, cw/ccw and with Speeddisplay
 COM-1800 VSF: with potentiometric foot switch
 COM-2800: with overlap welding, pneumatic control for automated welding
 COM-2803S: with overlap welding, pneumatic control and. with Speeddisplay
 COM-3800: with overlap welding / Spot welding and tack welding
 COM-1803 ROB: with Robotic interface

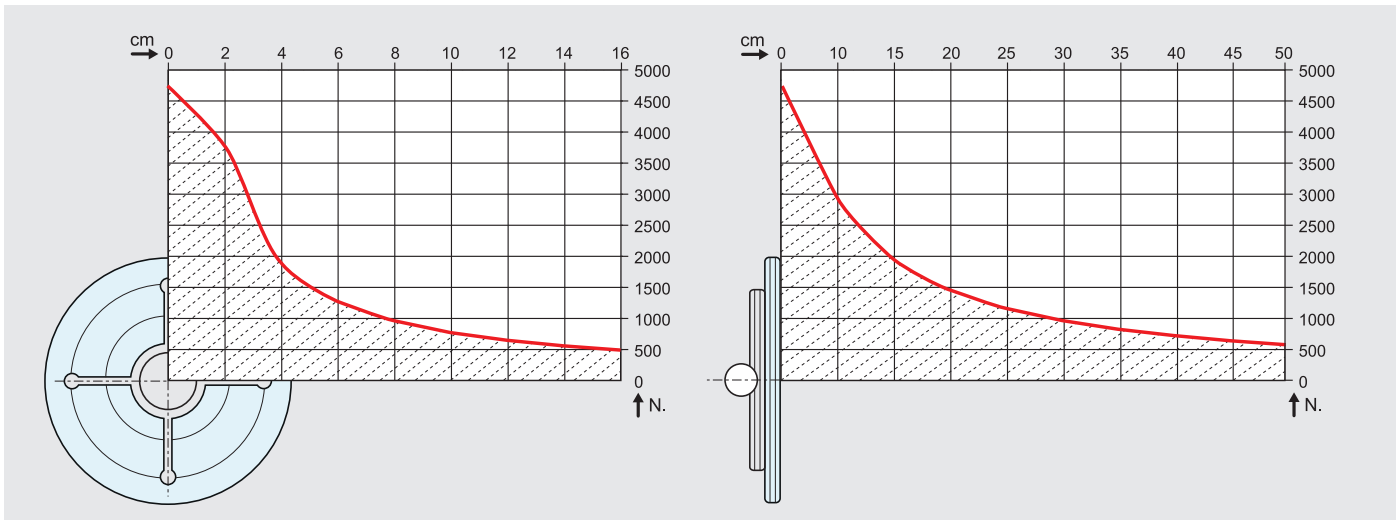
Modular Positioner Systems

Welding Positioner PRO 4

Perfectly positioned

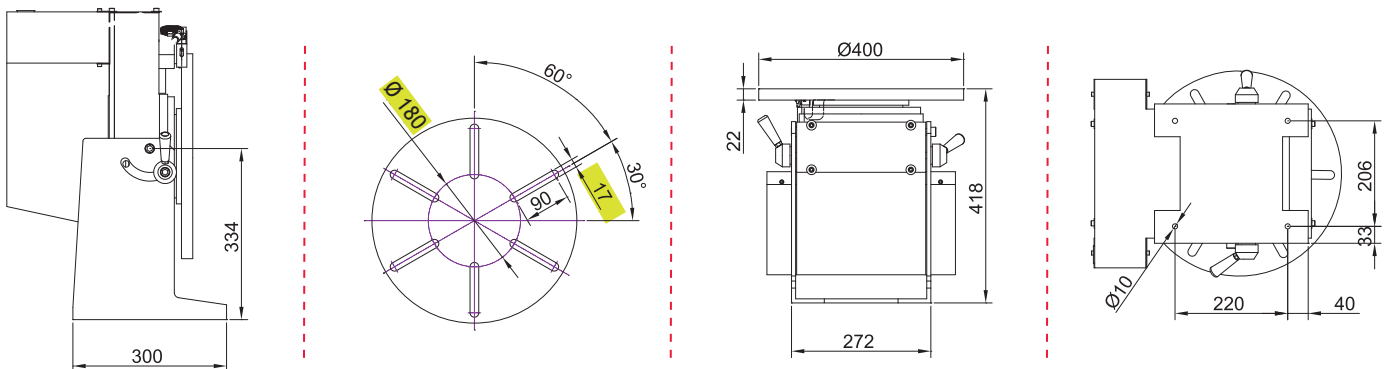
When choosing a turntable, the turning and tilting moment must be considered by all means. The distance between the center of gravity of the workpiece and the faceplate must be considered and the eccentric distance of the center of gravity and the center respectively. Don't forget

the weight of the clamping device. It is often higher than the weight of the workpiece itself. The workpieces can be positioned optimally for welding with a turning and tilting table. This improves productivity and quality significantly.



When choosing your positioner, please consider

- the center of gravity of your workpiece
- the weight of your tensioning device (chuck)



Note

suitable three-jaw chuck for PRO4 Chuck 400 JW, Chuck 200 D and Chuck 325 D



figg. Chuck 400JW